

To: Customers

Ref: FESN-2203

Fuji Electric Co., Ltd

Fuji Electric Exhaust Gas Cleaning System (EGCS)
Factory Relocation For Calibration item (Turbidity Sensor, PAH Sensor)

We would like to express our deepest appreciation for your continuous support to our ship exhaust gas cleaning system (EGCS).

This announce is only for end users, using Chelsea water quality sensor on our EGCS. Our factory, receiving Turbidity sensor and PAH sensor for calibration, will be moving to below address.

New address for receiving Sensors for calibration.

Name: Fuji Electric Co., Ltd, Field Services Parts Reception Center
Attention to Mr. Orito (Higashi2-1F)

A d d: Fuji-Machi 1, Hino City, Tokyo, 191-8502

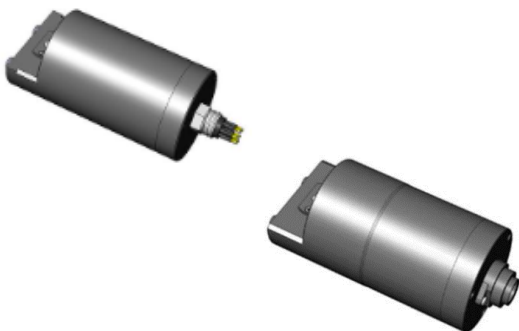
T e l: +81-(0)42-583-6803

Start date: 16/May/2022

Our Sagami-hara Factory, currently receiving sensor for calibration, operates until 15/May/2022. Thus if you have sensors to be calibrated by us, kindly send us by above due date. Also please be advised that "Vessel Name", "Turbidity Sensor" and "PAH Sensor" should be mentioned on delivery note when you or your agent dispatch sensors to us.

We are sorry for short notice and appreciate to your sincere understanding.

Turbidity Sensor (2 types)



PAH Sensor



Either type is supplied to your good vessel

With Best Regards