

# Corporate Data

## Company Information (As of March 31, 2017)

Company Name	FUJI ELECTRIC CO., LTD.
Established	August 29, 1923
Head Office	1-1, Tanabeshinden, Kawasaki-ku, Kawasaki-shi 210-9530, Japan
Head Office Business Address	Gate City Ohsaki, East Tower, 11-2, Osaki 1-chome, Shinagawa-ku, Tokyo 141-0032, Japan
Capital Stock	¥47.6 billion
Employees (Consolidated)	26,503 (Domestic 17,716, Overseas 8,787)
Net Sales (Consolidated)	¥837.8 billion (Year ended March 31, 2017)
Stock Code	6504

## Stock Information (As of March 31, 2017)

Issued and Outstanding Shares	746,484,957
Number of Shareholders	36,913
Major Shareholders	

Shareholders' names	Number of shares (1,000s)	Voting rights (%)
FUJITSU LIMITED	74,333	10.41
The Master Trust Bank of Japan, Ltd. (Trust Account)	47,456	6.64
Japan Trustee Services Bank, Ltd. (Trust Account)	46,726	6.54
Mizuho Bank, Ltd.	22,254	3.12
Asahi Mutual Life Insurance Company	19,775	2.77
FANUC CORPORATION	13,421	1.88
Japan Trustee Services Bank, Ltd. (Trust Account 5)	11,070	1.55
FURUKAWA CO., LTD.	11,025	1.54
Furukawa Electric Co., Ltd.	8,738	1.22
JP MORGAN CHASE BANK 380634	8,571	1.20

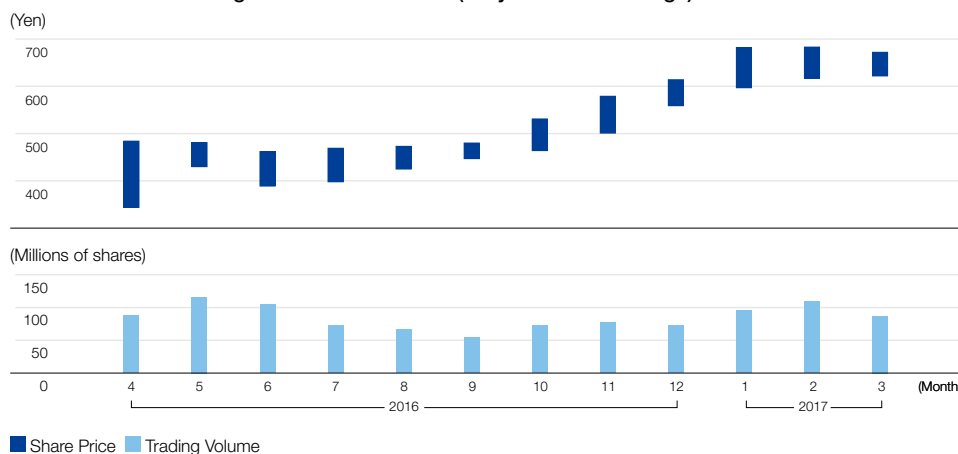
Notes: 1. Treasury stock of 32,158,991 shares is excluded from the above list of top 10 shareholders.  
2. The ratio of shareholding is calculated by deducting the number of treasury stock from the total number of shares outstanding based on the provisions of the Ordinance for Enforcement of the Companies Act.

### Share Distribution by Shareholder Type

Type	Number of shareholders	Number of shares	Holding (%)
Financial institutions / securities firms	117	275,152,680	36.86
Other domestic corporations	457	125,810,276	16.85
Foreign corporations	535	224,226,344	30.04
Individuals and others	35,804	121,295,657	16.25
Total	36,913	746,484,957	100.00

Note: "Individuals and others" includes treasury stock.

### Share Price and Trading Volume Fluctuations (Tokyo Stock Exchange)



## Consolidated Subsidiaries and Equity-Method Affiliates (As of July 1, 2017)

### Consolidated Subsidiaries (Domestic): 23

Fuji Electric FA Components & Systems Co., Ltd.	Shinshu Fuji Electric Co., Ltd.
Fuji Furukawa Engineering & Construction Co., Ltd.*1	Hoei Plastics Co., Ltd.
Fuji Electric IT Solutions Co., Ltd.	Mie Fuji Co., Ltd.
Hoei Denki Co., Ltd.	Fuji Electric Retail Service Co., Ltd.
Hokkaido Fuji Electric Co., Ltd.	Fuji Electric F-Tech Co., Ltd.
Fuji Electric Meter Co., Ltd.	Fuji Electric Finance and Accounting Support Co., Ltd.
Fuji IT Co., Ltd.	Fuji Electric Information Technology Center Co., Ltd.
Ibaraki Fuji Co., Ltd.	Fuji Office and Life Service Co., Ltd.
Hakko Electronics Co., Ltd.	Fuji Festec Co., Ltd.
Fuji Electric FA Service Co., Ltd.	Fuji Electric Technica Co., Ltd.
Fuji Electric Power Semiconductor Co., Ltd.	Chichibu Fuji Co., Ltd.
Fuji Electric Tsugaru Semiconductor Co., Ltd.	

\*1 Fuji Furukawa Engineering & Construction Co., Ltd., is listed on the second section of the Tokyo Stock Exchange.

### Equity-Method Affiliates (Domestic): 3

METAWATER Co., Ltd.*2	Fuji Furmanite Co., Ltd.
METAWATER SERVICE Co., Ltd.	

\*2 METAWATER Co., Ltd., is listed on the first section of the Tokyo Stock Exchange.

### Consolidated Subsidiaries (Overseas): 47

Fuji Electric Asia Pacific Pte. Ltd.	Fuji Electric Dalian Co., Ltd.
Fuji SMBE Pte. Ltd.	Fuji Electric Motor (Dalian) Co., Ltd.
Fuji Electric (Thailand) Co., Ltd.	Dalian Fuji Bingshan Vending Machine Co., Ltd.
Fuji Electric Manufacturing (Thailand) Co., Ltd.	Dalian Fuji Bingshan Vending Machine Sales Co., Ltd.
Fuji Tusco Co., Ltd.	Fuji Electric (Hangzhou) Software Co., Ltd.
PT Fuji Electric Indonesia	Fuji Electric FA (Asia) Co., Ltd.
Fuji Electric India Private Ltd.	Fuji Electric Hong Kong Co., Ltd.
Fuji Electric Philippines, Inc.	Hoei Hong Kong Co., Ltd.
Fuji Electric (Malaysia) Sdn. Bhd.	Fuji Electric Taiwan Co., Ltd.
Fuji Electric (China) Co., Ltd.	Fuji Electric Korea Co., Ltd.
Shanghai Electric Fuji Electric Power Technology (Wuxi) Co., Ltd.	Fuji Electric Corp. of America
Wuxi Fuji Electric FA Co., Ltd.	Fuji Electric Europe GmbH
Fuji Electric (Changshu) Co., Ltd.	Fuji Electric France S.A.S.
Fuji Electric (Zhuhai) Co., Ltd.	Reliable Turbine Services LLC
Fuji Electric (Shenzhen) Co., Ltd.	Fuji SEMEC Inc.

Including the 30 above-listed companies, 47 companies.

### Equity-Method Affiliate (Overseas): 1

FUJI FURUKAWA E&C (Thailand) Co., Ltd.
--