

9 INDUSTRY, INNOVATION  
AND INFRASTRUCTURE

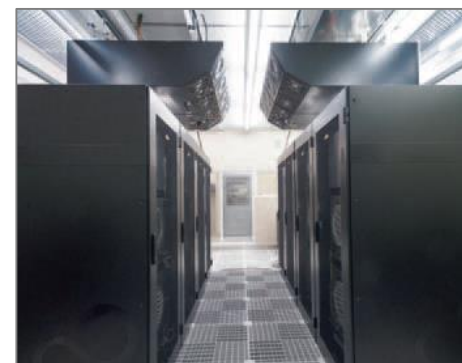


### Development of resilient infrastructure, promotion of sustainable industry, and expansion of innovation

#### ● Contributions to Specific SDG Targets

- 9.1 Develop sustainable and resilient infrastructure to support economic development
- 9.4 Reduce CO<sub>2</sub> emissions during industrial processes

Fuji Electric provides one-stop service for UPSs, emergency power generation equipment, air-conditioning systems, power monitoring and control systems, and other equipment for the data centers that support cloud services and electronic transactions along with lifecycle maintenance services to contribute to highly reliable infrastructure operation.



#### 【Other SDG Targets to Which Contributions Are Made】

7 AFFORDABLE AND  
CLEAN ENERGY



7.3 Improve energy efficiency

11 SUSTAINABLE CITIES  
AND COMMUNITIES



11.5 Reduction of the number of deaths and the number of people affected and the direct economic losses caused by disasters

13 CLIMATE  
ACTION



13.3 Improvement of institutional capacity for climate change mitigation