

Measures to Prevent Infringement of Intellectual Property Rights

As part of our intellectual property activities, we employ a system to monitor other companies' patents on a daily basis to prevent any inadvertent infringement of patents held by third parties.

To prevent infringement, we also conduct compliance program training.

With respect to our own patents, we actively acquire patent rights to protect our business. We also take measures against counterfeit products and take other steps to reduce risks related to intellectual property.

* Please see page 22 for further information about Fuji Electric's activities in intellectual property.

Initiatives for Strengthening Business Continuity Capabilities

Fuji Electric aims to ensure that it can continue its core operations even if an unexpected event such as a natural disaster or accident occurs, continuing to uphold its social responsibilities as a company and providing a stable supply of high performance, high quality products and services required by our customers. To this end, we are promoting the following initiatives.

Fire Safety and Disaster Preparedness Initiatives

Learning lessons from the Great East Japan Earthquake, which struck in March 2011, we have produced a Disaster Prevention and Procedural Manual. Based on this manual, we have created a disaster preparedness headquarters system. Meanwhile, at operational sites and affiliates, we have put in place thorough measures to ensure that structures and facilities are earthquake resistant, stockpile emergency goods, and conduct regular drills, among other measures.

Business Continuity Initiatives

In addition to disaster preparedness initiatives, Fuji Electric has formulated a business continuity plan (BCP) covering the head office, which acts as a command center during disasters, and its factories, which have a large number of key management resources required for supplying products, such as production facilities.

In fiscal 2014, we expanded the range of products covered by our BCP and conducted simulation drills for a major disaster at the head office and factories to ensure that the plan can be used if a disaster does occur.

We will continue our initiatives to further expand the number of products covered by the BCP to include those of subsidiaries in Japan and overseas. Meanwhile, we will strengthen our disaster response capabilities by making ongoing efforts to promote wider awareness of the BCP through drills and other measures while continuing to make improvements.

Reducing Procurement Risk

To reduce procurement risk, we have established a procurement BCP based on the following measures: 1) building a supplier damage information collection system; 2) securing multiple suppliers for key components; and 3) establishing alternate sites to carry out procurement operations.

In fiscal 2014, our internal procurement divisions held a simulation drill, and started BCP training for suppliers to share the procurement BCP with them.

Looking ahead, we will expand the procurement BCP to the procurement divisions of subsidiaries in and outside Japan, as well as strengthen the plan to effectively reduce our procurement risk globally.



A simulation drill to prepare for a large-scale disaster

Reducing IT Risk

We have formulated an IT-BCP comprising initiatives for restarting and recovering the IT systems we need to continue operations and administration if a disaster, accident or other event occurs, within the required time.

In fiscal 2014, Fuji Electric and its domestic affiliates took measures to preserve their IT systems, such as strengthening disaster countermeasures and moving facilities to safer locations.

Our next step will be to promote these measures at overseas subsidiaries too, as we continue our efforts to reduce IT risk.

Corporate Information

■ Company Information (As of March 31, 2015)

Company Name	FUJI ELECTRIC CO., LTD.
Established	August 29, 1923
Head Office	1-1, Tanabeshinden, Kawasaki-ku, Kawasaki-shi 210-9530, Japan
Head Office Business Address	Gate City Ohsaki, East Tower, 11-2, Osaki 1-chome, Shinagawa-ku, Tokyo 141-0032, Japan
Capital Stock	¥47.6 billion
Employees (consolidated)	25,740 (Domestic 17,814, Overseas 7,926)
Net Sales (consolidated)	¥810.7 billion (Year ended March 31, 2015)
Stock Code	6504

■ Stock Information (As of March 31, 2015)

Issued and Outstanding Shares	746,484,957
Number of Shareholders	43,162

Major Shareholders

Shareholders' names	Number of shares (1000s)	Voting rights (%)
FUJITSU LIMITED	74,333	10.40
The Master Trust Bank of Japan, Ltd. (Trust Account)	42,622	5.97
Japan Trustee Services Bank, Ltd. (Trust Account)	39,797	5.57
Mizuho Bank, Ltd. (MHBK)	22,254	3.11
Asahi Mutual Life Insurance Company	19,776	2.77
FANUC CORPORATION	13,421	1.88
FURUKAWA CO., LTD.	11,025	1.54
STATE STREET BANK AND TRUST COMPANY 505223	10,729	1.50
THE BANK OF NEW YORK, NON-TREATY JASDEC ACCOUNT	9,365	1.31
Furukawa Electric Co., Ltd.	8,738	1.22

Notes: 1. Treasury stock of 32,057,107 shares is excluded from the above list of top 10 shareholders.

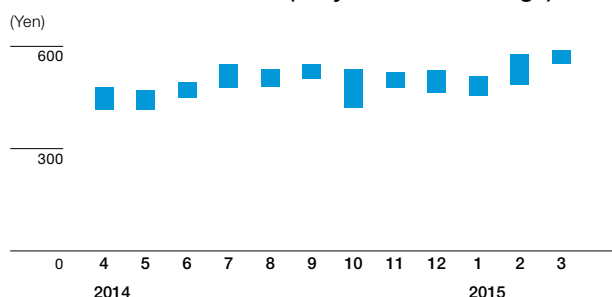
2. The ratio of shareholding is calculated by deducting the number of treasury stocks from the total number of shares outstanding based on the provisions of the Ordinance for Enforcement of the Companies Act.

Share Distribution by Shareholder Type

Type	Number of shareholders	Number of shares	Holding (%)
Financial institutions / securities firms	119	250,504,991	33.56
Other domestic corporations	510	126,637,751	16.96
Foreign corporations	450	228,334,653	30.59
Individuals and other	42,083	141,007,562	18.89
Total	43,162	746,484,957	100.00

Note: "Individuals and other" includes treasury stock.

Share Price Fluctuations (Tokyo Stock Exchange)



■ Consolidated Subsidiaries and Equity-Method Affiliates (As of July 1, 2015)

Consolidated Subsidiaries (Domestic): 22

Fuji Electric FA Components & Systems Co., Ltd.	Shinshu Fuji Electric Co., Ltd.
Fuji Furukawa Engineering & Construction Co., Ltd.	Fuji Electric Power Semiconductor Co., Ltd.
Fuji Electric Technica Co., Ltd.	Fuji Electric Information Technology Center Co., Ltd.
Fuji Electric Finance and Accounting Support Co., Ltd.	Fuji Electric F-Tech Co., Ltd.
Hoei Denki Co., Ltd.	Hakko Electronics Co., Ltd.
Hokkaido Fuji Electric Co., Ltd.	Fuji Electric IT Solutions Co., Ltd.
Fuji Office & Life Service Co., Ltd.	Mie Fuji Co., Ltd.
Chichibu Fuji Co., Ltd.	Fuji Electric FA Service Co., Ltd.
Ibaraki Fuji Co., Ltd.	GE Fuji Meter Co., Ltd.
Hoei Plastics Co., Ltd.	FESTEC Co., Ltd.
Fuji IT Co., Ltd.	Fuji Electric Tsugaru Semiconductor Co., Ltd.

* Fuji Furukawa Engineering & Construction Co., Ltd. is listed on the second section of the Tokyo Stock Exchange.

Equity-method Affiliates (Domestic): 4

Japan AE Power Systems Corporation	METAWATER SERVICE Co., Ltd.
METAWATER Co., Ltd.	Fuji Furmanite Co., Ltd.

*METAWATER Co., Ltd. is listed on the first section of the Tokyo Stock Exchange.

Consolidated Subsidiaries (Overseas): 43

Fuji Electric Asia Pacific Pte. Ltd.	Fuji Electric (Changshu) Co., Ltd.
Fuji SMBE Pte. Ltd.	Fuji Electric (Shenzhen) Co., Ltd.
Fuji Electric (Thailand) Co., Ltd.	Fuji Electric Dalian Co., Ltd.
Fuji Electric Manufacturing (Thailand) Co., Ltd.	Fuji Electric Motor (Dalian) Co., Ltd.
Fuji Tusco Co., Ltd.	Dalian Fuji Bingshan Vending Machine Co., Ltd.
Fuji Electric Philippines, Inc.	Dalian Fuji Bingshan Vending Machine Sales Co., Ltd.
Fuji Electric (Malaysia) Sdn. Bhd.	Fuji Electric (Hangzhou) Software Co., Ltd.
Fuji Electric India Private Ltd.	Fuji Electric FA (Asia) Co., Ltd.
PT Fuji Electric Indonesia	Fuji Electric Hong Kong Co., Ltd.
Fuji Electric (China) Co., Ltd.	Hoei Hong Kong Co., Ltd.
Shanghai Fuji Electric Switchgear Co., Ltd.	Fuji Electric Taiwan Co., Ltd.
Shanghai Fuji Electric Transformer Co., Ltd.	Fuji Electric Korea Co., Ltd.
Shanghai Electric Fuji Electric Power Technology (Wuxi) Co., Ltd.	Fuji Electric Corp. of America
Fuji Electric (Zhuhai) Co., Ltd.	Fuji Electric Europe GmbH
Wuxi Fuji Electric FA Co., Ltd.	Fuji Electric France S.A.S.

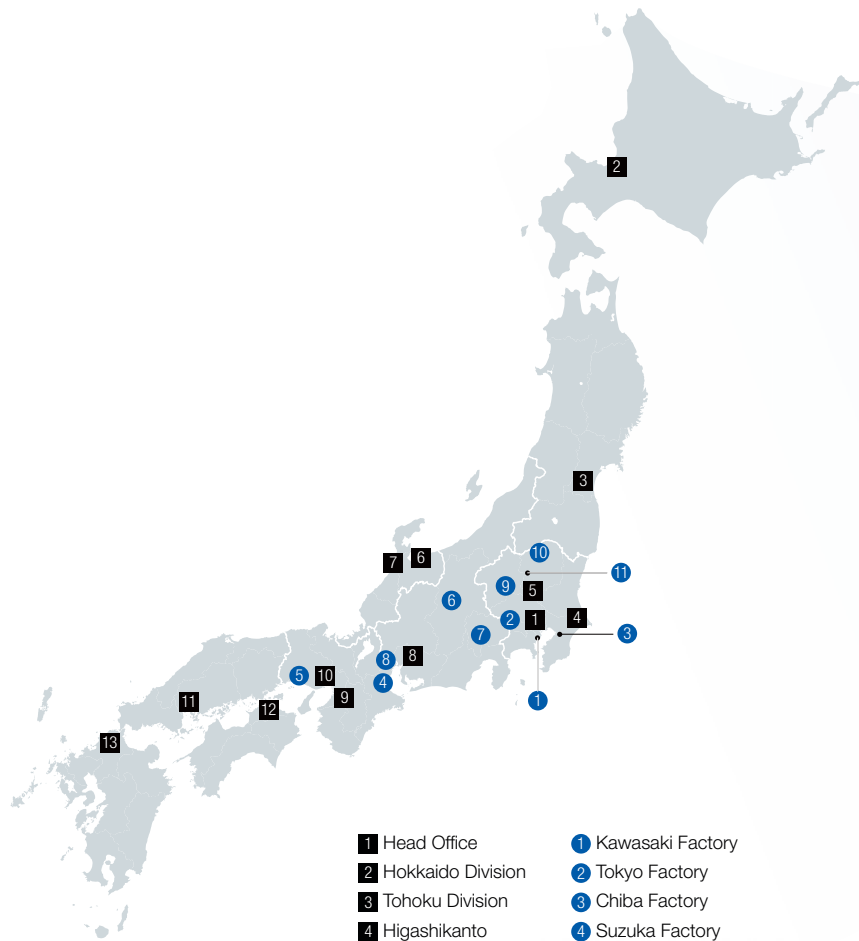
Including the 30 above-listed companies, 43 companies.

Equity-method Affiliate (Overseas): 1

FUJI FURUKAWA E&C (THAILAND) Co., Ltd.
--

Global Network (As of July 1, 2015)

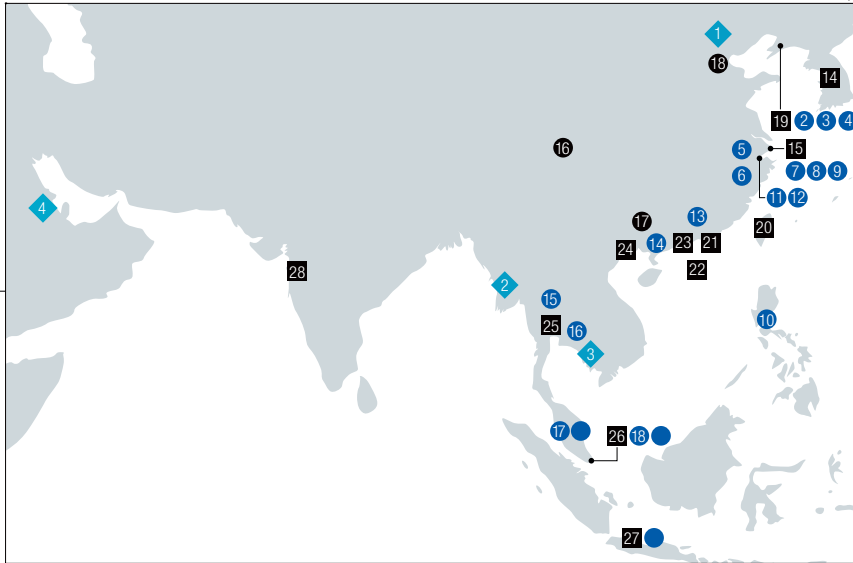
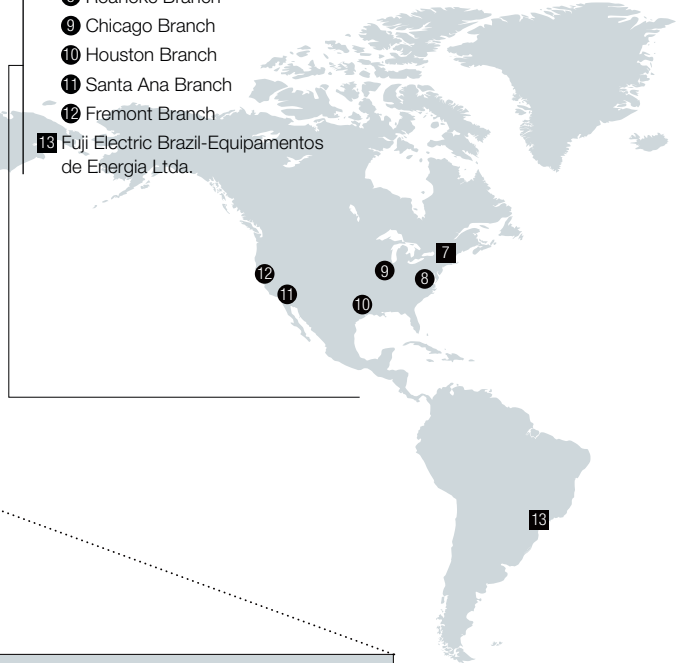
- : Sales sites
- : Manufacturing sites
- ◆ : Overseas offices



- | | |
|---------------------------|-------------------------------|
| 1 Head Office | 1 Kawasaki Factory |
| 2 Hokkaido Division | 2 Tokyo Factory |
| 3 Tohoku Division | 3 Chiba Factory |
| 4 Higashikanto Department | 4 Suzuka Factory |
| 5 Kitakanto Department | 5 Kobe Factory |
| 6 Hokuriku Division | 6 Matsumoto Factory |
| 7 Kanazawa Department | 7 Yamanashi Factory |
| 8 Chubu Division | 8 Mie Factory |
| 9 Kansai Division | 9 Fukiage Factory |
| 10 Kobe Department | 10 Otawara Factory |
| 11 Chugoku Division | 11 Facility Technology Center |
| 12 Shikoku Division | |
| 13 Kyushu Division | |
| 14 Okinawa Division | |

- 1 Fuji Electric Europe GmbH
- 2 Switzerland Branch
- 3 U.K. Branch
- 4 France Branch
- 5 Italy Branch
- 6 Spain Branch
- 1 Fuji Electric France S.A.S.

- 7 Fuji Electric Corp. of America
- 8 Roanoke Branch
- 9 Chicago Branch
- 10 Houston Branch
- 11 Santa Ana Branch
- 12 Fremont Branch
- 13 Fuji Electric Brazil-Equipamentos de Energia Ltda.



- 14 Fuji Electric Korea Co., Ltd.
- 15 Fuji Electric (China) Co., Ltd.
- 16 West China Branch
- 17 South China Branch
- 18 North China Branch
- 19 Dalian Fuji Bingshan Vending Machine Sales Co., Ltd.
- 20 Fuji Electric Taiwan Co., Ltd.
- 21 Fuji Electric Hong Kong Co., Ltd.
- 22 Hoi Hong Kong Co., Ltd.
- 23 Fuji Electric FA (Asia) Co., Ltd.
- 24 Fuji Electric Vietnam Co., Ltd.
- 25 Fuji Electric (Thailand) Co., Ltd.

- 26 Fuji Electric Asia Pacific Pte. Ltd.
- 27 PT Fuji Electric Indonesia
- 28 Fuji Electric India Private Ltd.
- 2 Fuji Electric Dalian Co., Ltd.
- 3 Fuji Electric Motor (Dalian) Co., Ltd.
- 4 Dalian Fuji Bingshan Vending Machine Co., Ltd.
- 5 Fuji Electric (Changshu) Co., Ltd.
- 6 Wuxi Fuji Electric FA Co., Ltd.
- 7 Shanghai Fuji Electric Switchgear Co., Ltd.
- 8 Shanghai Fuji Electric Transformer Co., Ltd.

- 9 Shanghai Electric Fuji Electric Power Technology (Wuxi) Co., Ltd.
- 10 Fuji Electric Philippines, Inc.
- 11 Zhejiang Innovation Fuji Technology Co., Ltd.
- 12 Fuji Electric (Hangzhou) Software Co., Ltd.
- 13 Fuji Electric (Shenzhen) Co., Ltd.
- 14 Fuji Electric (Zhuhai) Co., Ltd.
- 15 Fuji Electric Manufacturing (Thailand) Co., Ltd.
- 16 Fuji Tusco Co., Ltd.

- 17 Fuji Electric (Malaysia) Sdn. Bhd.
- 18 Fuji SMBE Pte. Ltd.
- Fuji SMBE Pte. Ltd. subsidiaries (13 companies)

- ◆ Beijing Rep. Office
- ◆ Fuji Electric Co., Ltd. (Myanmar Branch Office)
- ◆ Rep. Office of Fuji Electric Co., Ltd. (in Cambodia)
- ◆ Middle East Branch