

Recycling Resources

Fuji Electric is promoting the 3Rs (reduce, reuse, recycle) in its products and working to expand the number of ecofriendly energy-creating and energy-conserving products.

At the same time, we are contributing to the creation of a recycling-oriented society by striving for zero emissions at our operational sites.

Reducing Waste

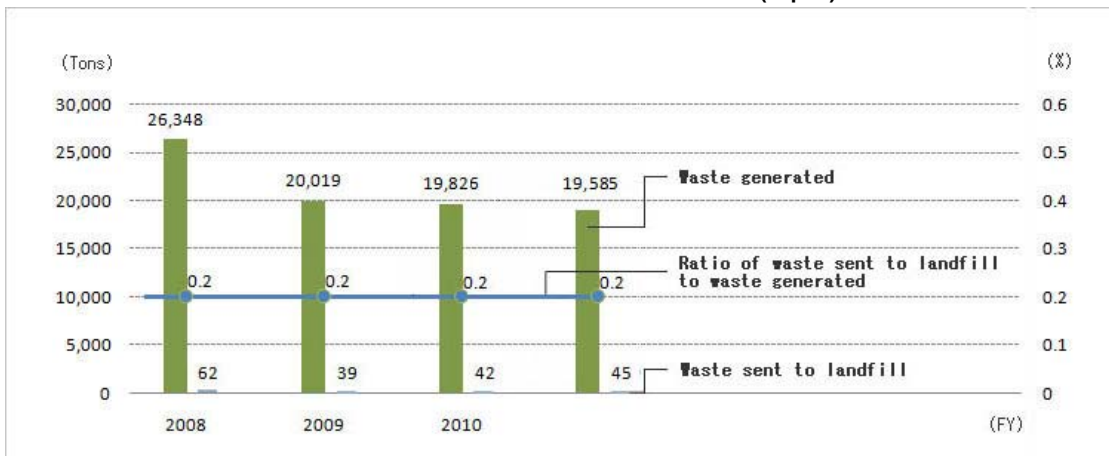
In Japan, Fuji Electric promotes recycling to attain the goal of zero waste, which means bringing landfill-bound waste down to 1% or less of the total. Since reaching this goal of zero waste in Japan in fiscal 2004, we have surpassed our targets each year. Moreover, we revised this target to 0.5% in fiscal 2011 and are strengthening efforts to contain the amount of generated waste.

Total waste generated in Japan in fiscal 2011 was 19,585 tons, roughly unchanged from last year, with waste destined for landfills totaling 45 tons. Fuji Electric achieved its revised target with the landfill ratio kept to 0.2%.

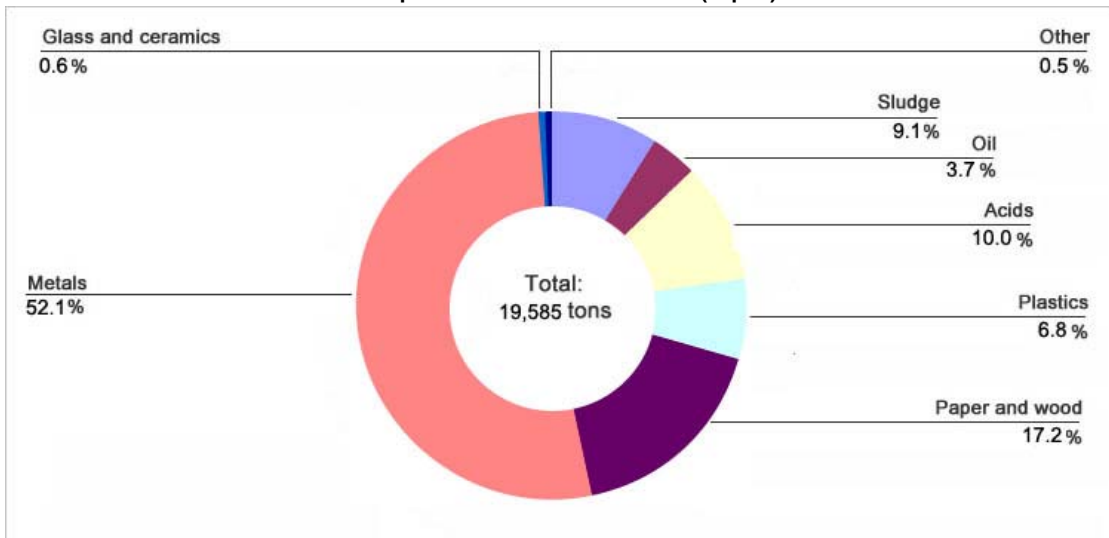
In addition, zero emission activities have been launched at overseas factories. Worldwide, waste treatment and disposal as well as resource recycling infrastructure is far less advanced than in Japan. This is particularly the case for Southeast Asia. Taking this condition into consideration, Fuji Electric is endeavoring to bring landfill-bound waste down to 8% or less of the total amount of waste generated at its overseas operations.

Looking ahead, we will contribute to the formation of a resource recycling-oriented society by promoting the reduction of waste.

Trends in Waste Emitted and Sent to Landfill (Japan)



Composition of Waste Generated (Japan)



Efficiently Using Water Resources

Fuji Electric recognizes that water resources play an essential role in the development of a resource recycling-oriented society. As a result, the Company is active in the management of wastewater emissions that contain heavy metals as well as chemical and other substances in accordance with wastewater regulations and standards. At the same time, we strive diligently to reduce to the amount of wastewater emissions.

In fiscal 2011, Fuji Electric put in place its Environmental Management 3-Year Rolling Plan. Under this plan, the Company has identified the targets of improving the total amount water consumed (water procured + ground water) and water consumption per unit of sales by 1% each year compared with levels recorded at production operations in Japan in fiscal 2010 with the ultimate aim of securing a 10% improvement in fiscal 2020.

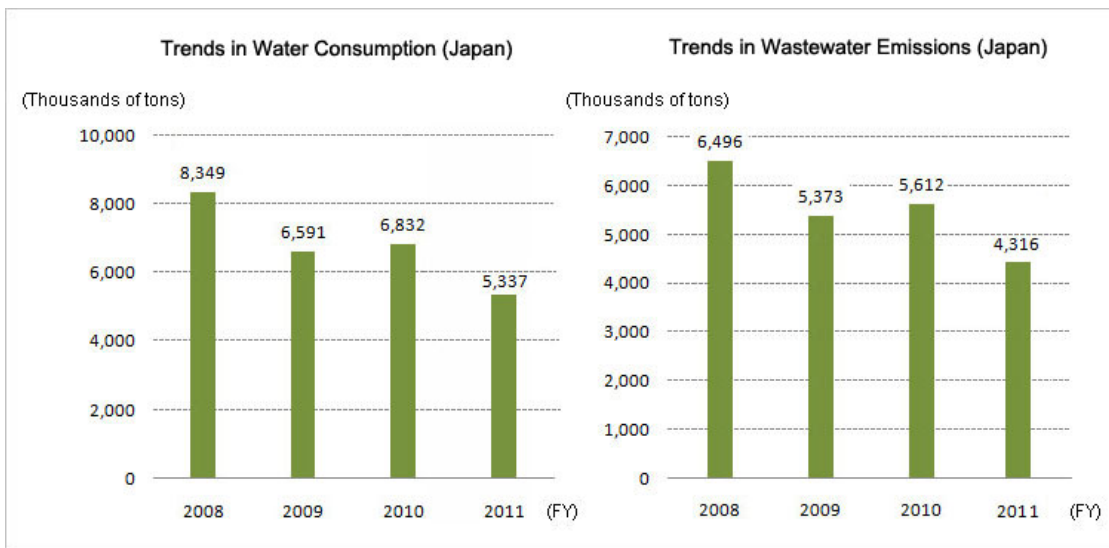
In fiscal 2011, the total amounts of water consumed and wastewater emissions were 5,337,000 tons and 4,316,000 tons, respectively. This represented an approximate 20% reduction in each category compared with the previous fiscal year and largely attributable to successful efforts to reduce the amount of water consumed at each business site and the temporary suspension of operations at two sites.

Moving forward, we will continue our efforts in each area while promoting the effective use of water particularly at Fuji Electric (Shenzhen) Co., Ltd. and other regions at risk of water resource depletion.

Reusing Wastewater from Semiconductor Production Processes

Semiconductor production processes, such as product cleaning, consume large amounts of pure water. Therefore, we have mounted a proactive effort to reuse the pure water emitted by the Matsumoto factory, which manufactures these products.

In the past, we used equipment to process wastewater that had not lost its level of purity, reusing this water in production processes. In fiscal 2011, equipment within the factory also began reusing water with a lower degree of purity, following confirmation of its commercial viability. We process wastewater having a lower level of purity through microfiltration membranes and other equipment, using it in cooling towers and for general use within offices. These efforts have reduced our water requirements by approximately 1,000m³ per day.



Copyright©2013 Fuji Electric Co.,Ltd. All Rights Reserved.